

USANDO O MPLAB

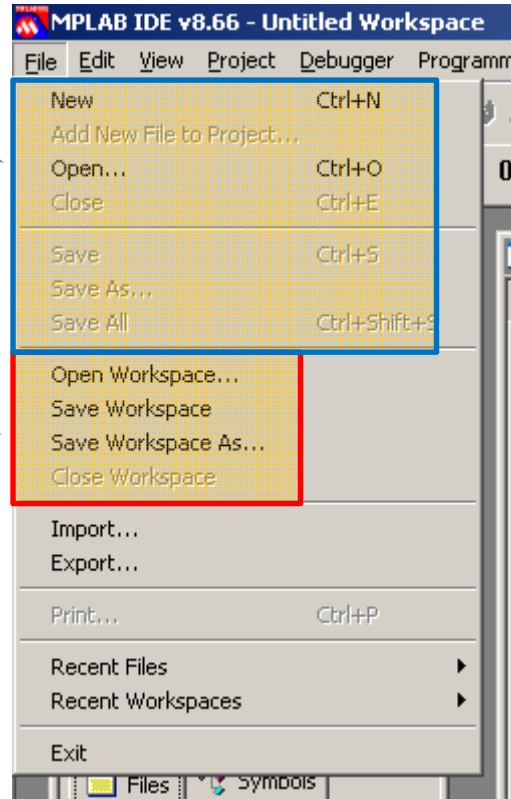


© Prof. Engº esp Luiz Antonio Vargas Pinto
www.vargasp.com

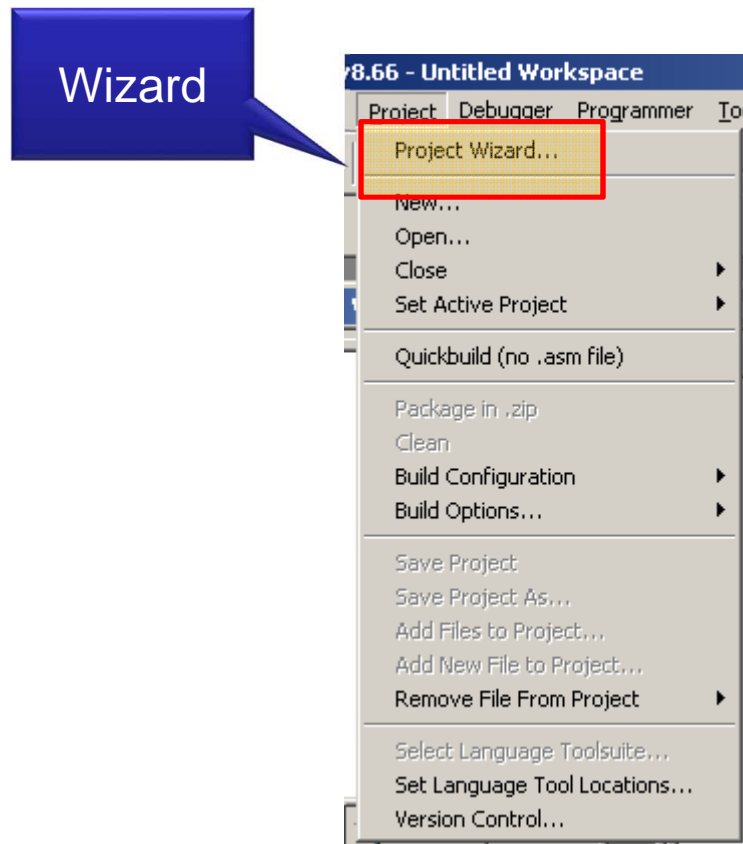
Menu File

Menu de Arquivos

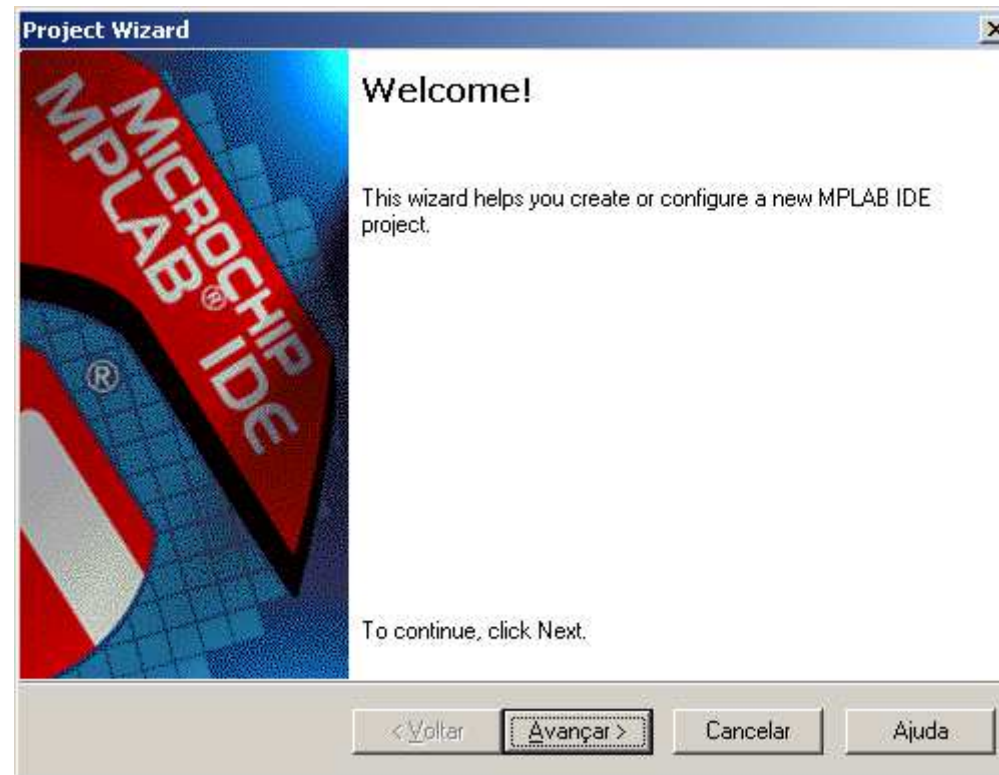
Menu de Projetos

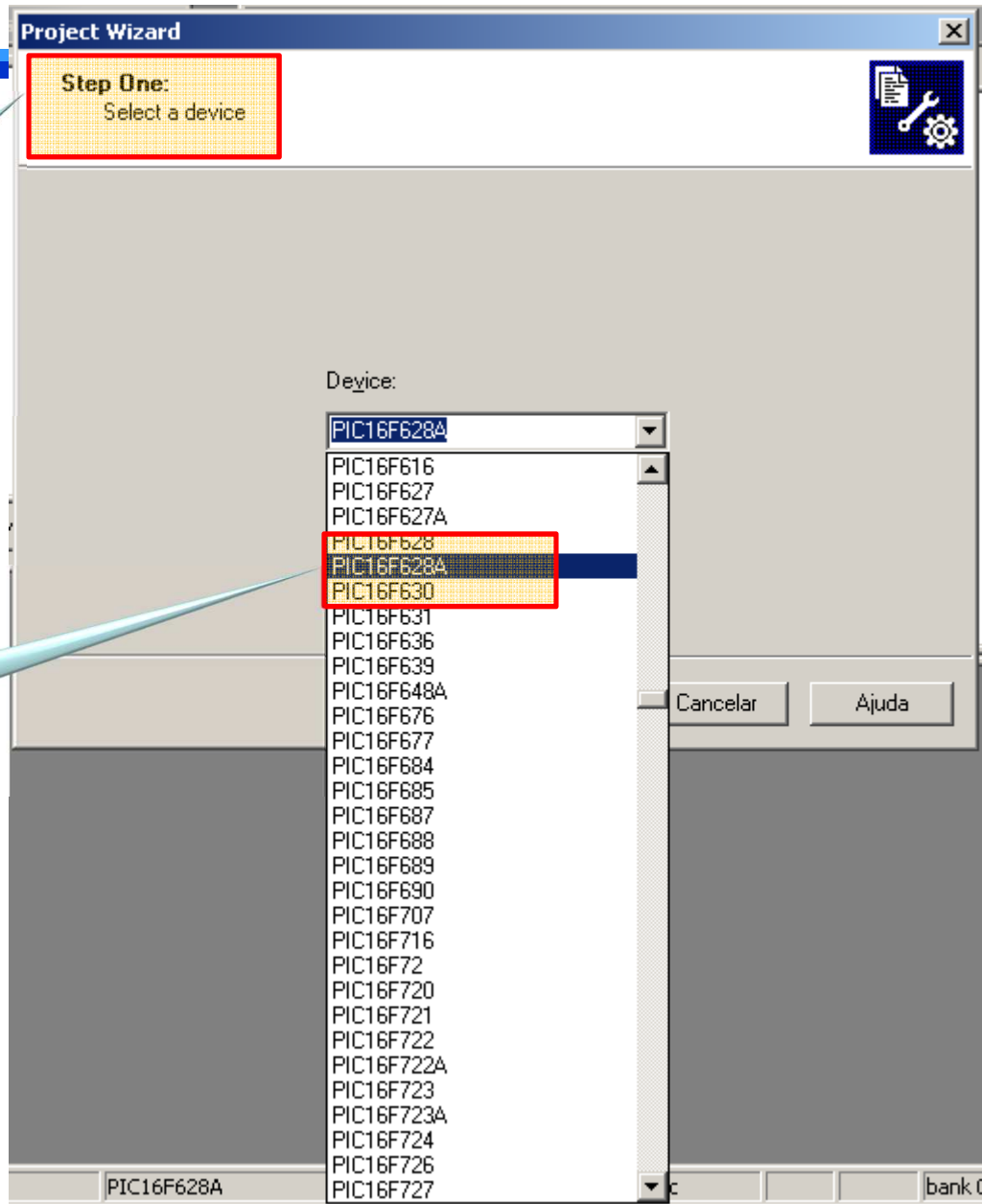


Menu Project



1º Menu

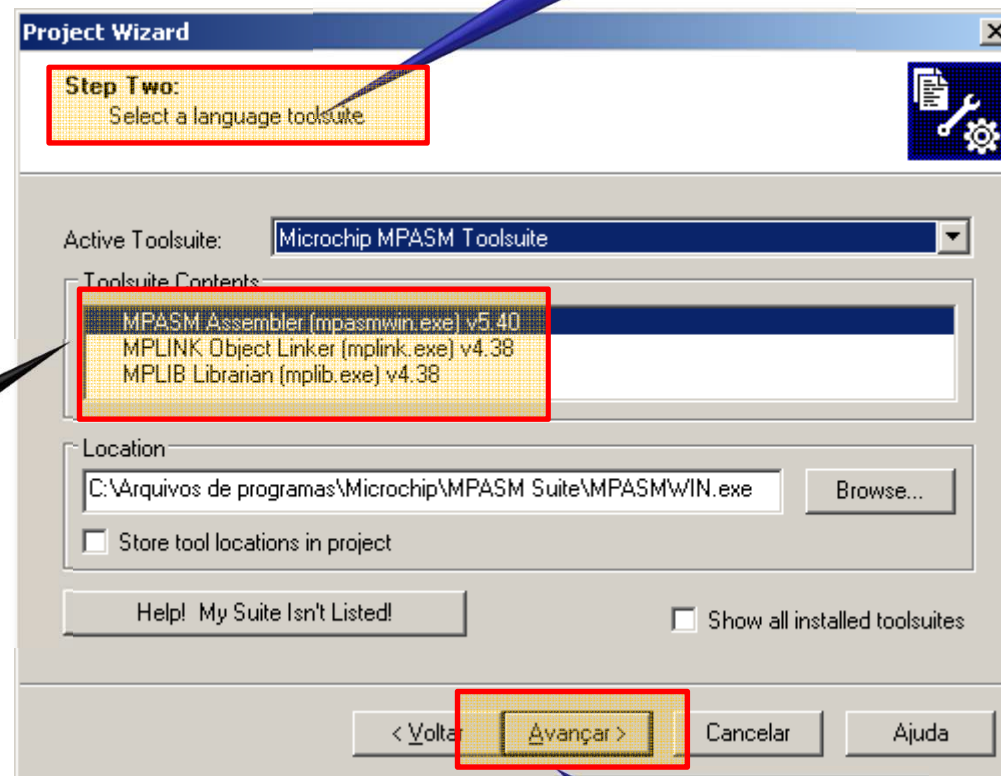




Escolher
PIC

PIC

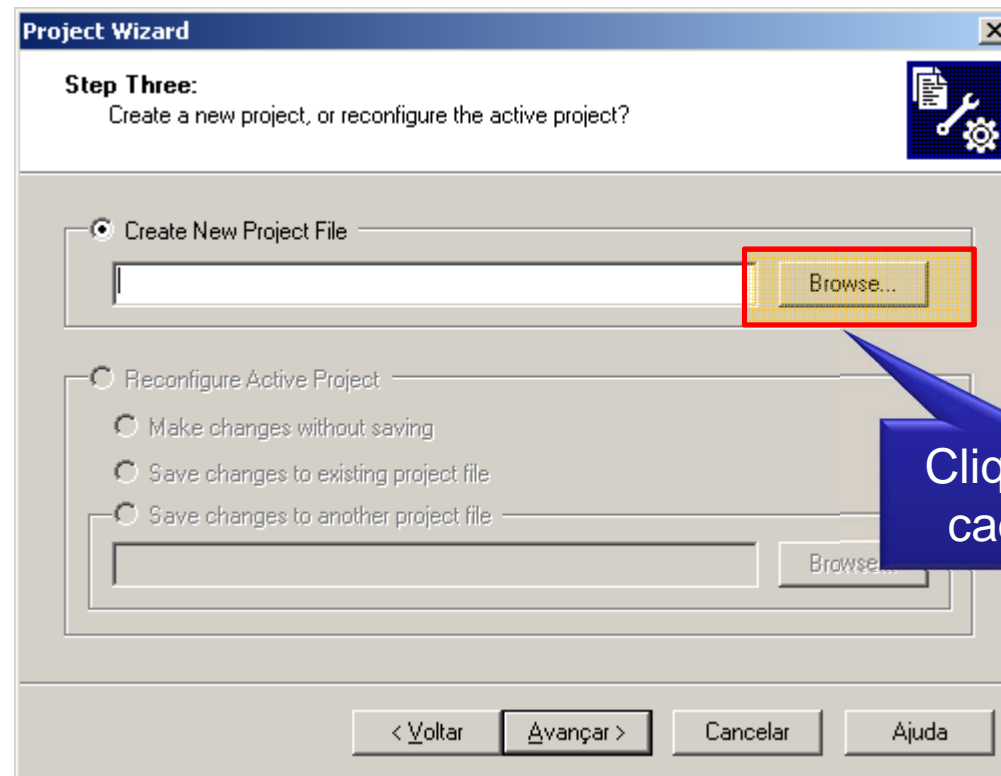
Ferramentas disponíveis



Problema se não tiver 3

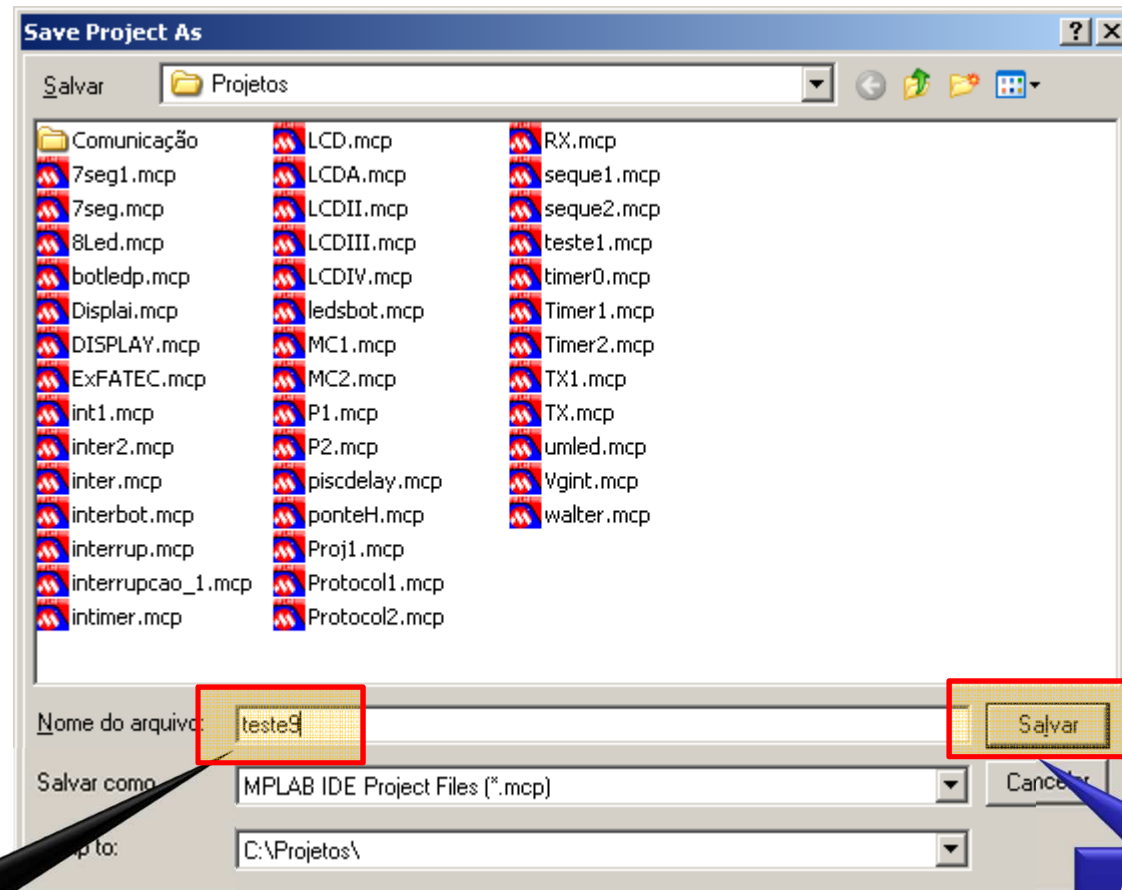
Avançar

Criar um ambiente de Projeto



Clique para
cadastrar

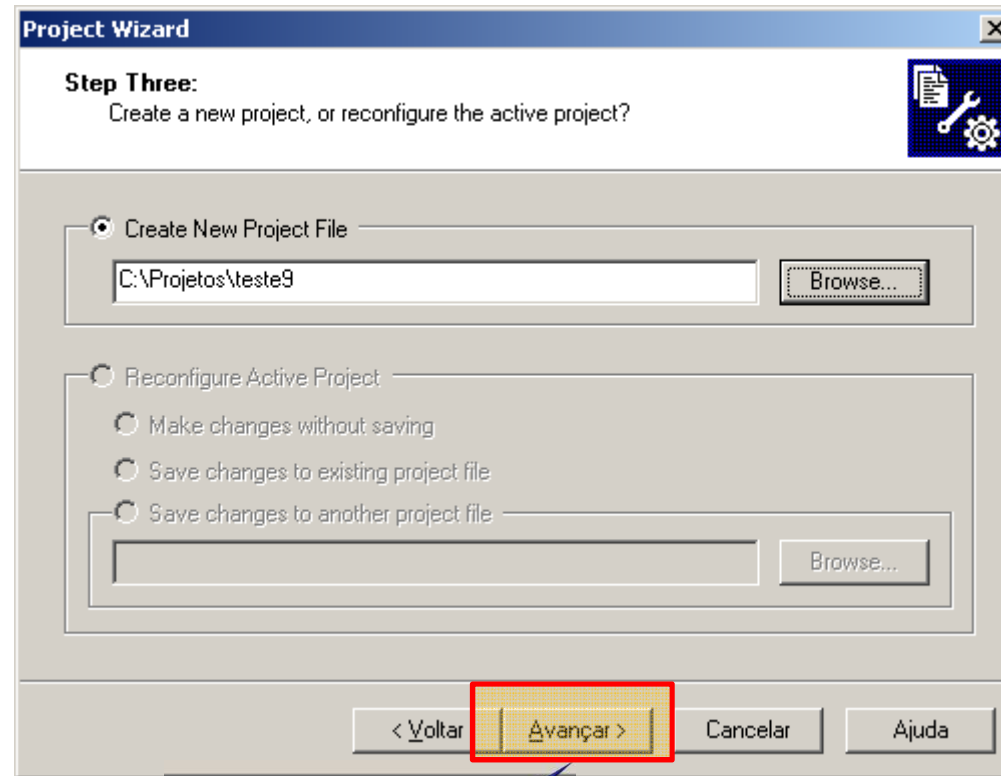
Nomeando um projeto



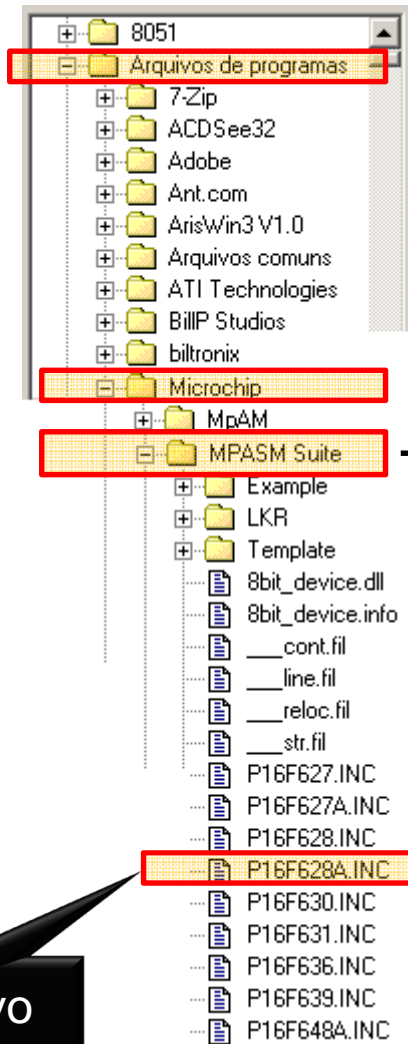
Nome simples
sem caracteres
de controle

Clique para
cadastrar

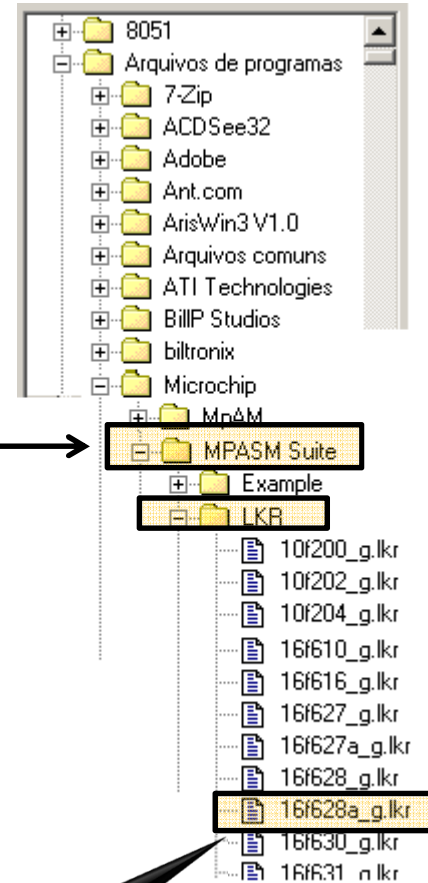
Proseguindo



Apenas
avance

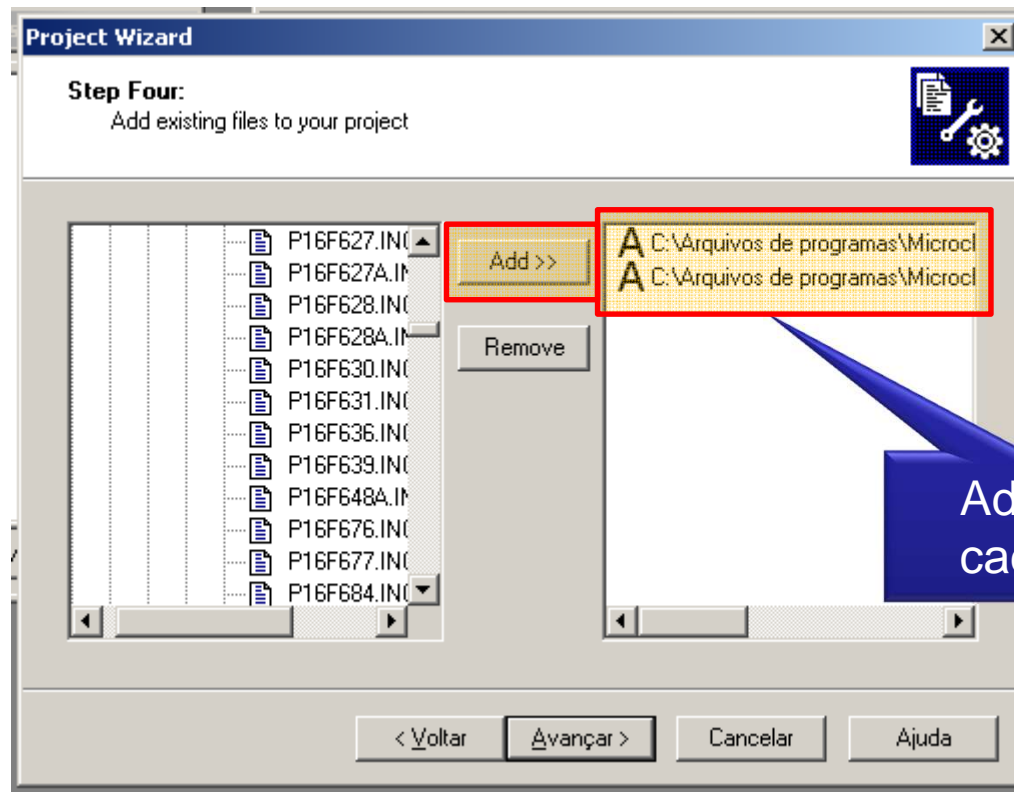


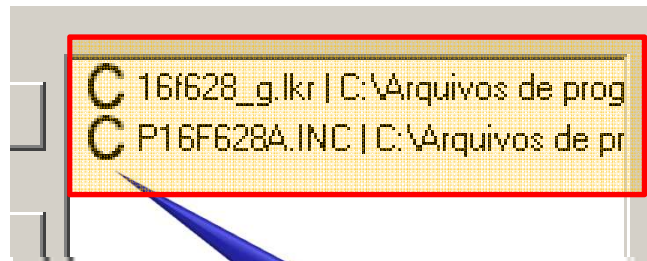
1º Arquivo



2º Arquivo

Adicionando os programas





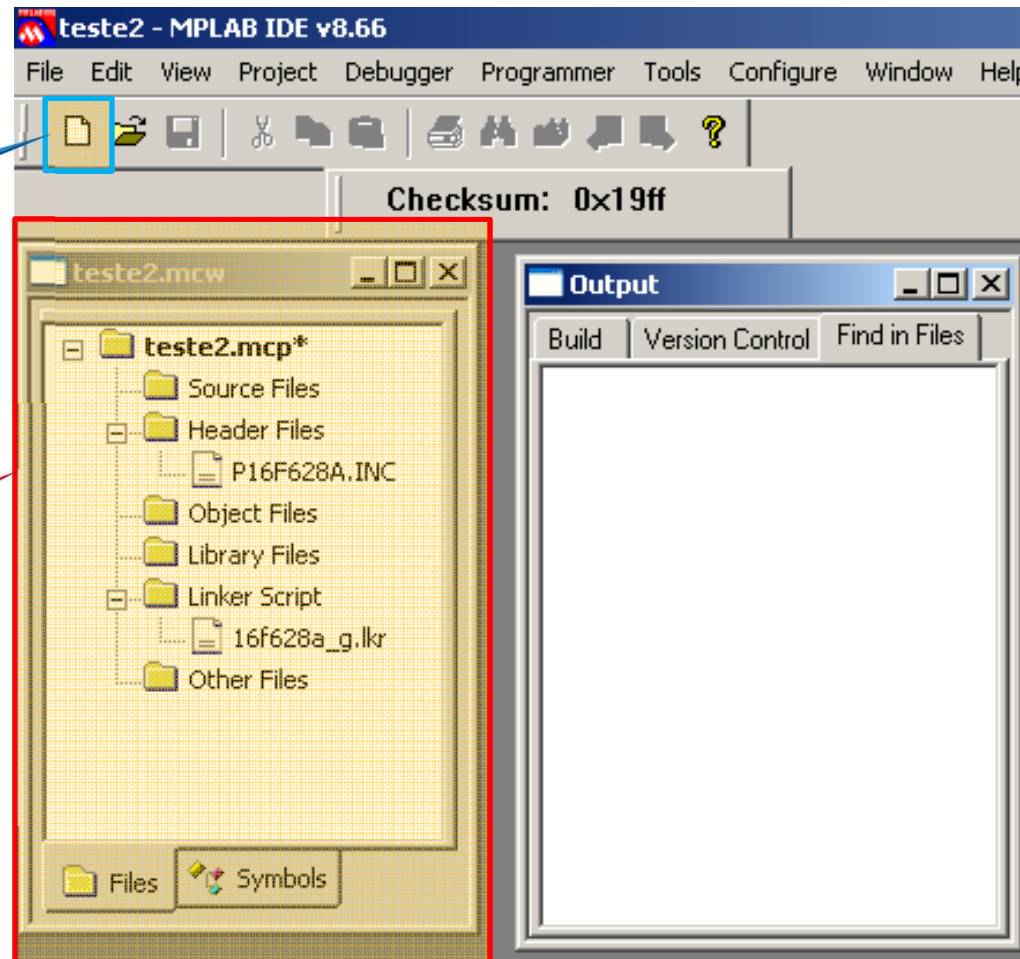
Clique até
virar C

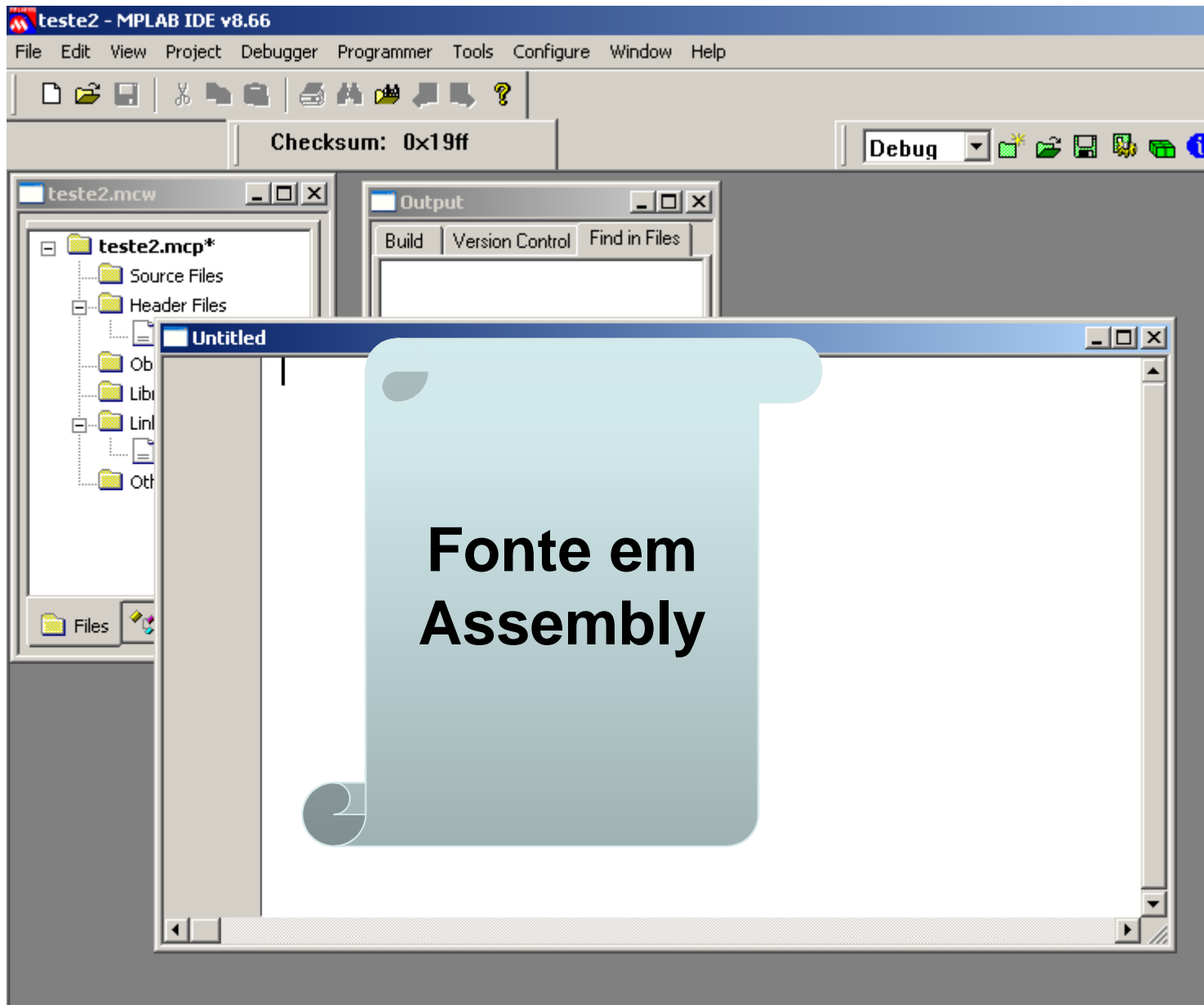
 Avançar e concluir

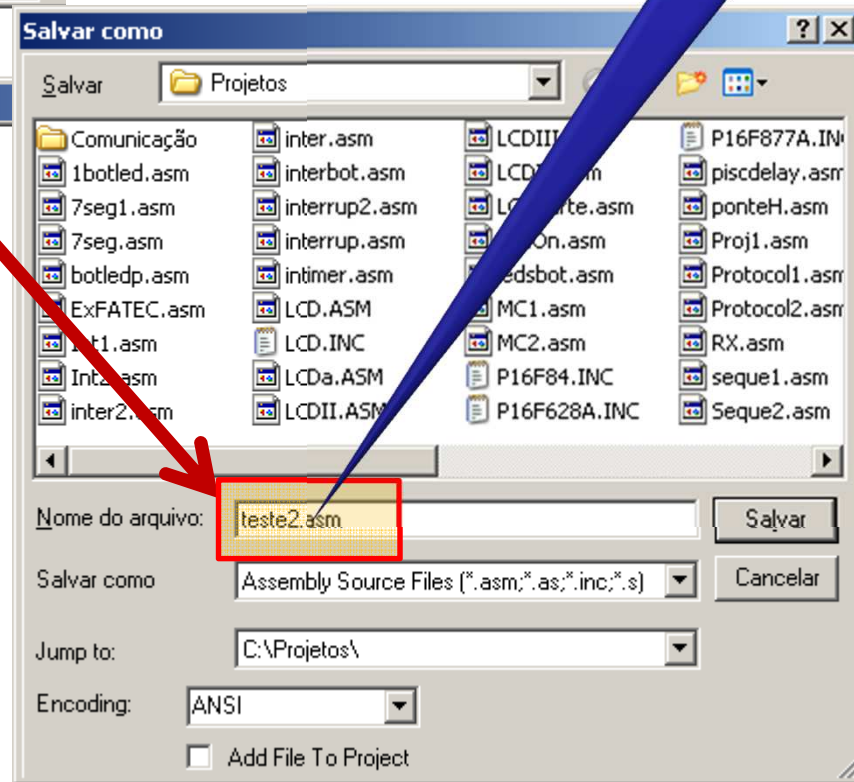
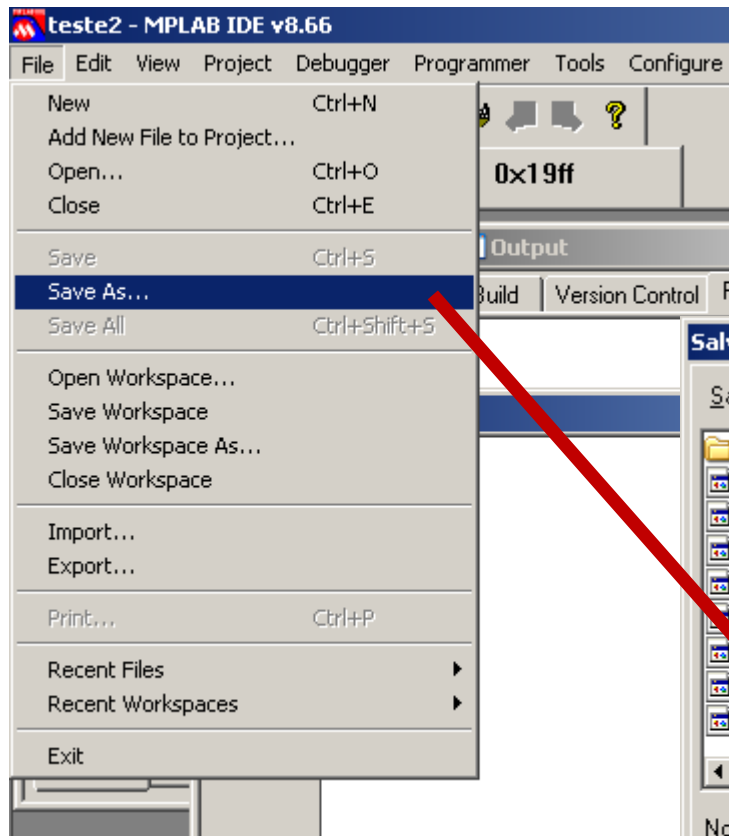
A tela pronta

Criação do
fonte
Assembly

Indicadores de
projeto bem
sucedido

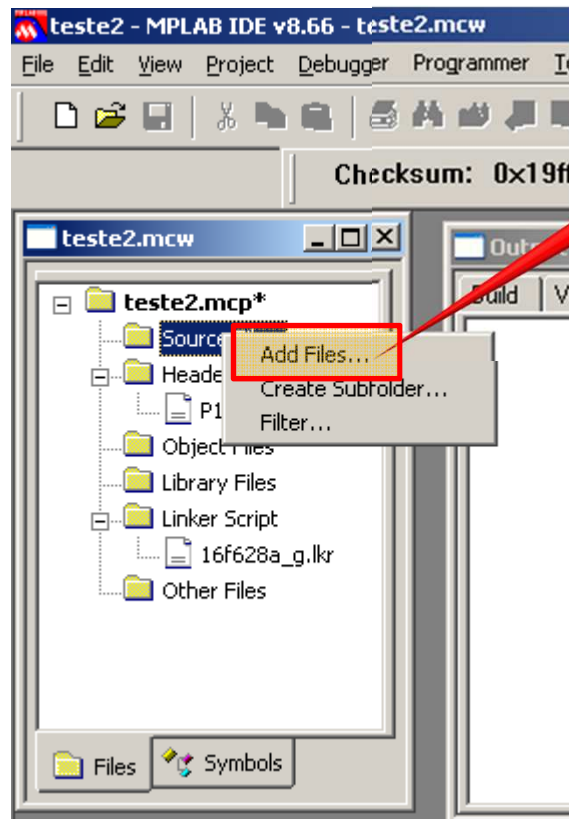






Observe
extensão ASM

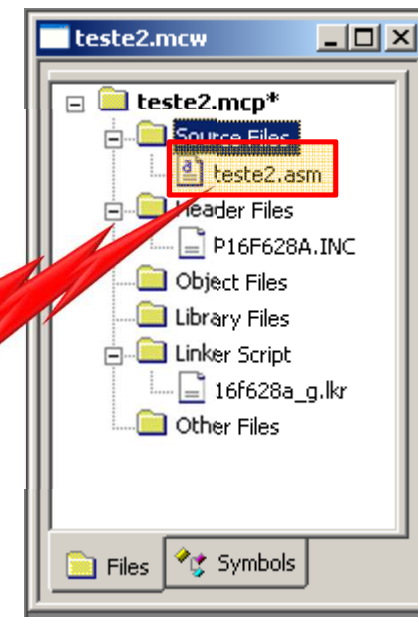
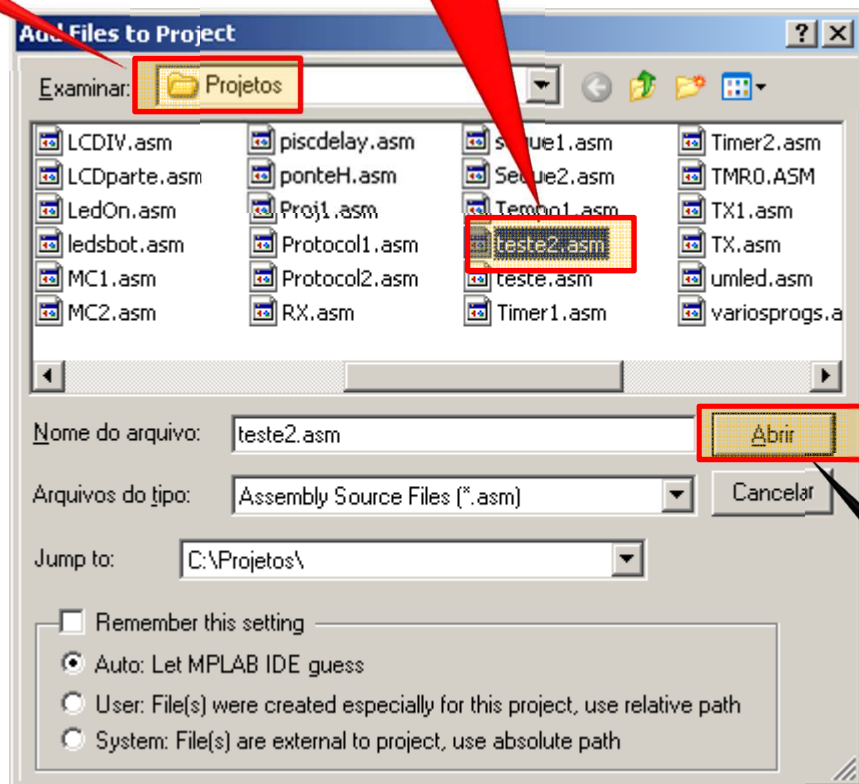
Salve e feche o arquivo



Adicionar
arquivo

Local

Selecioneado



Conectar