

USANDO O MPLAB

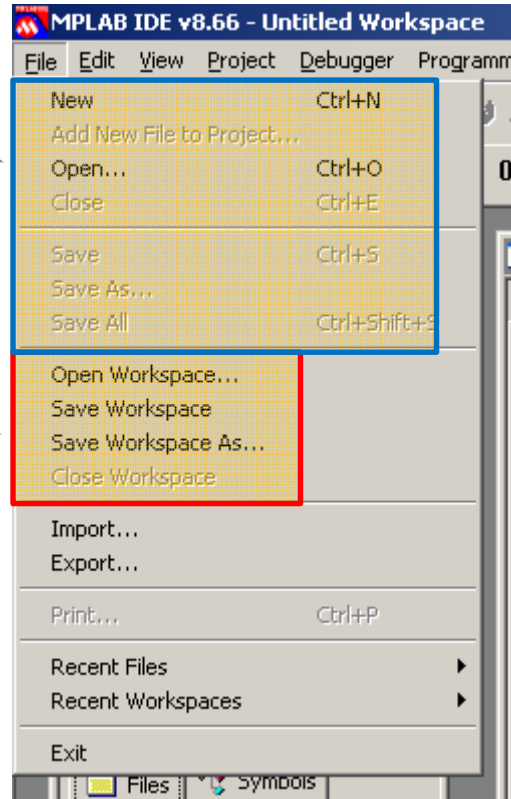


© Prof. Engº esp Luiz Antonio Vargas Pinto
www.vargasp.com

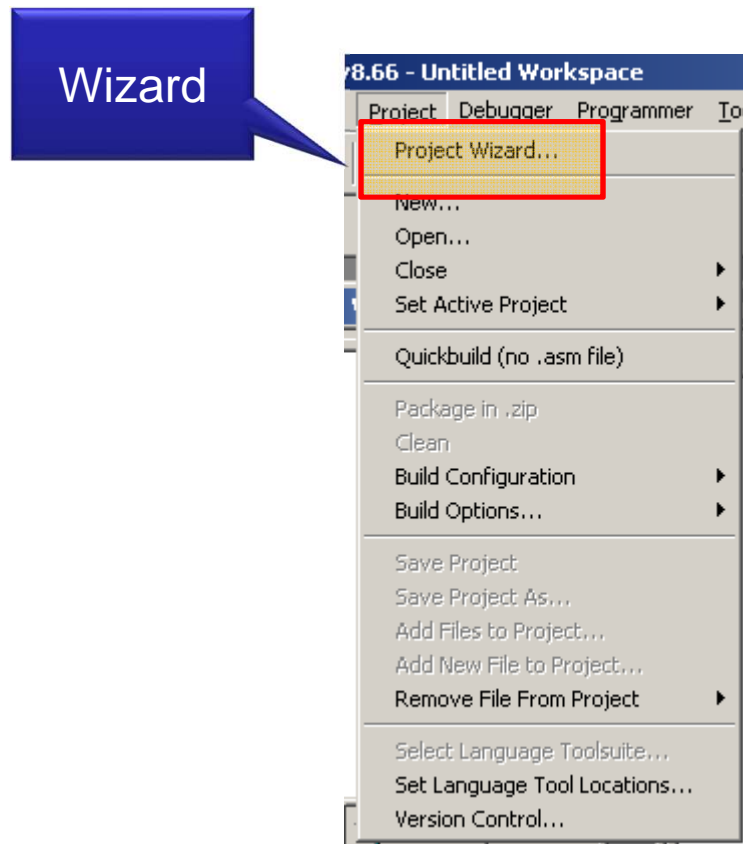
Menu File

Menu de Arquivos

Menu de Projetos

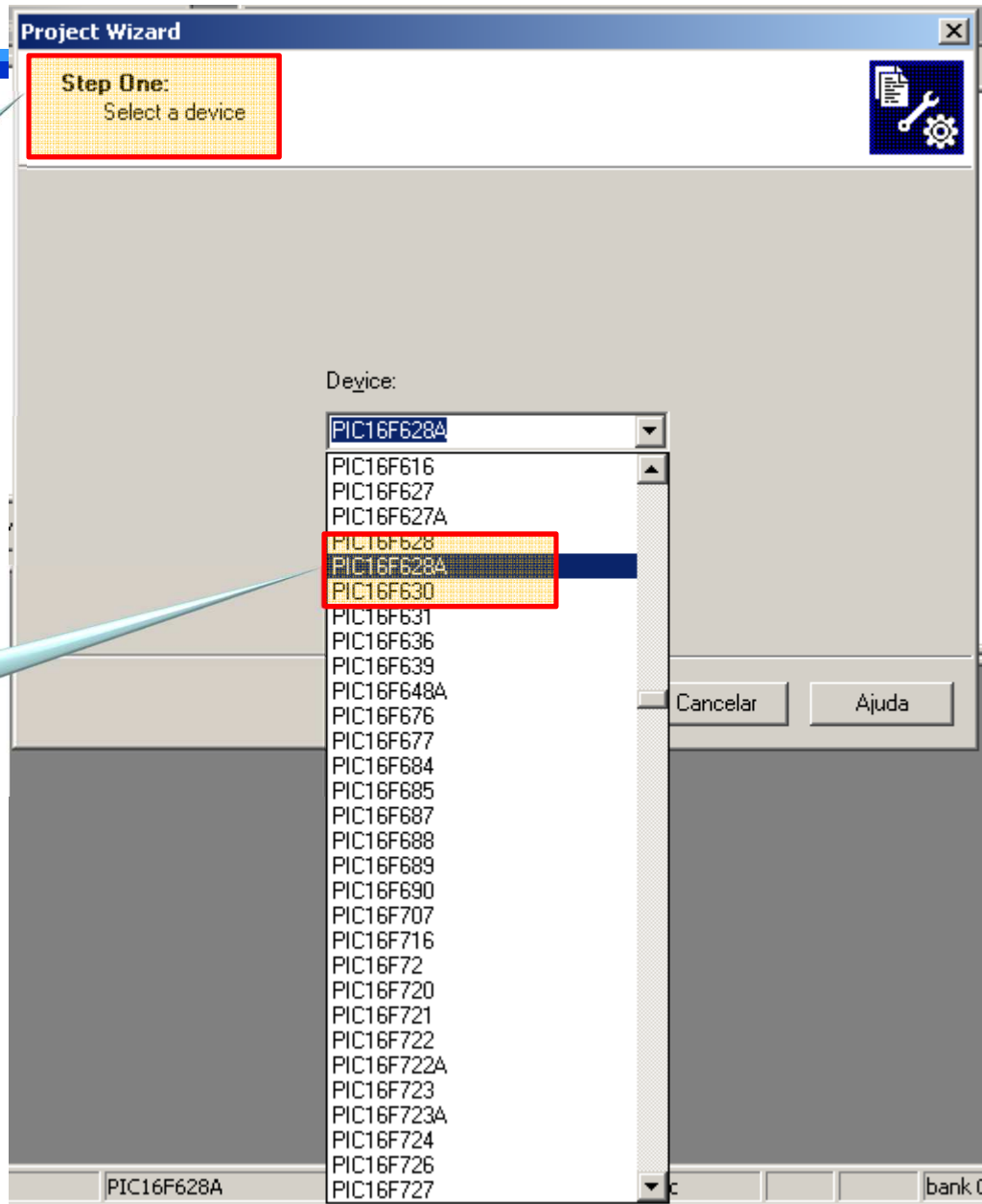


Menu Project



1º Menu

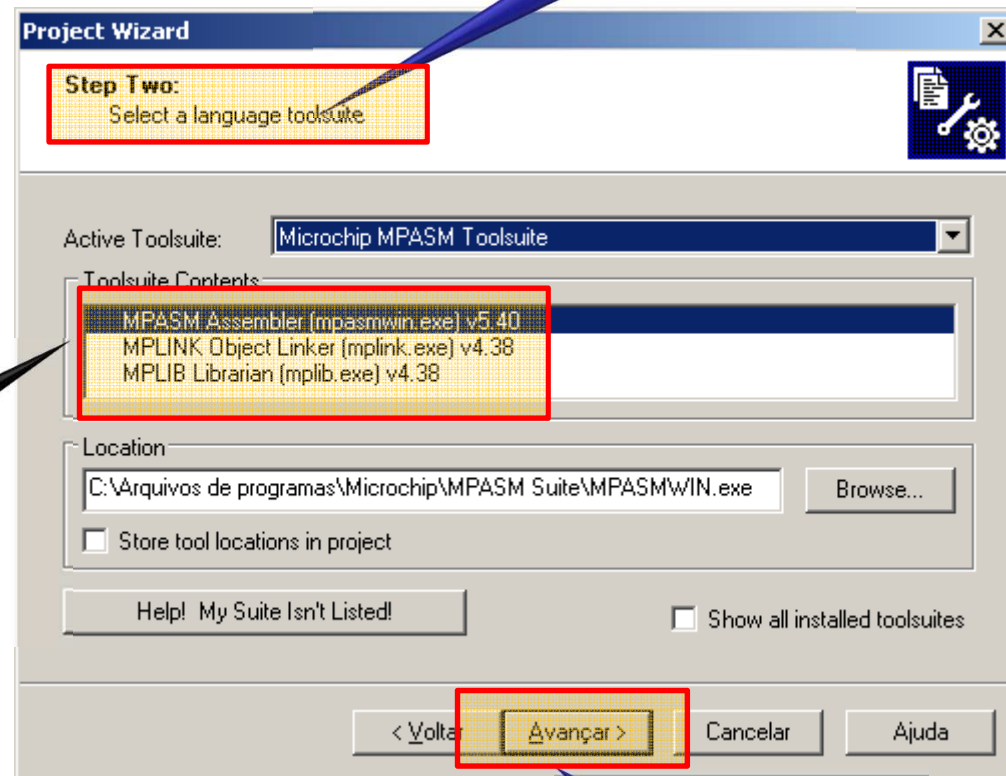




Escolher
PIC

PIC

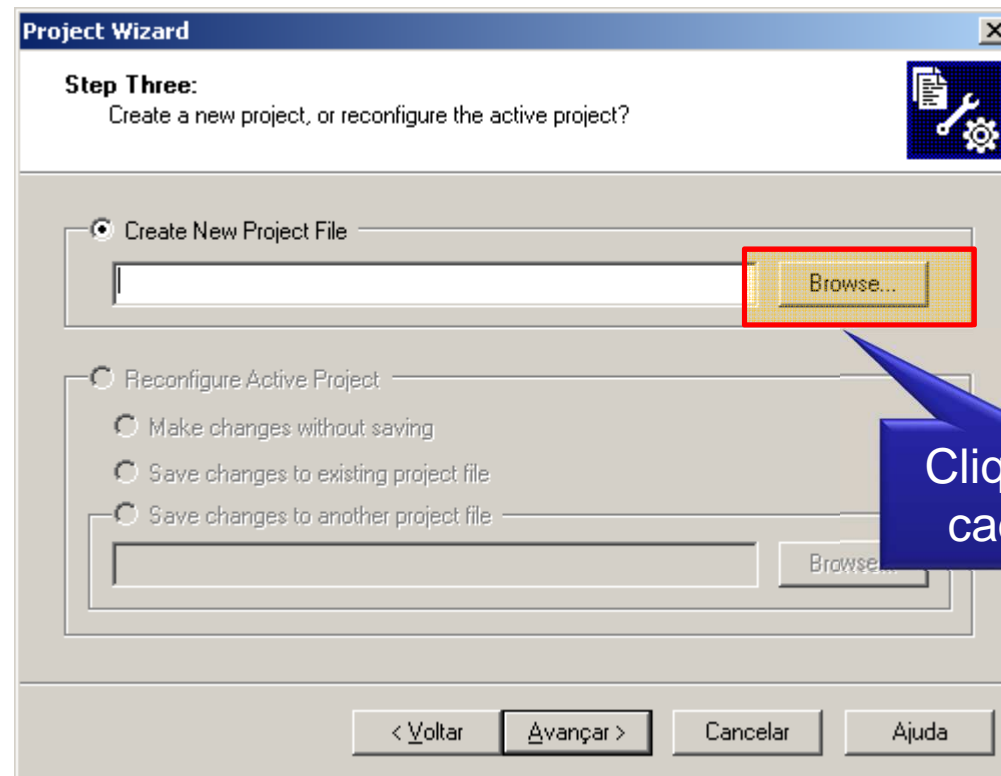
Ferramentas disponíveis



Problema se não tiver 3

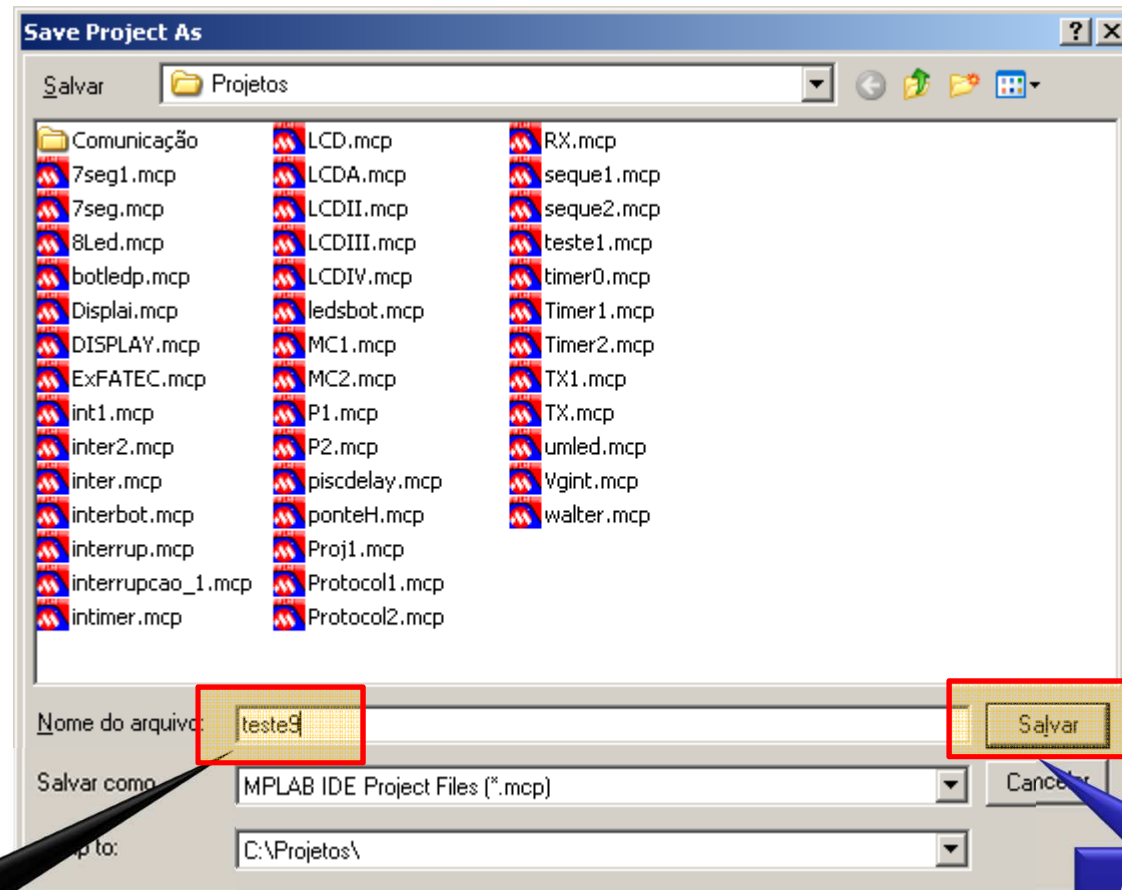
Avançar

Criar um ambiente de Projeto



Clique para
cadastrar

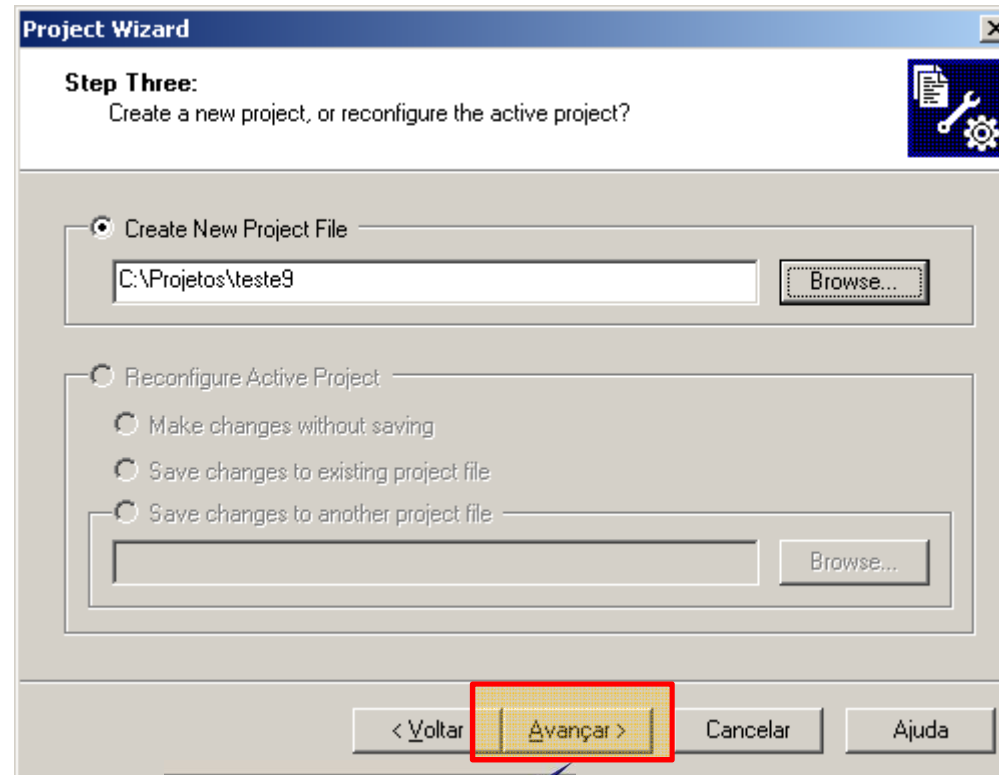
Nomeando um projeto



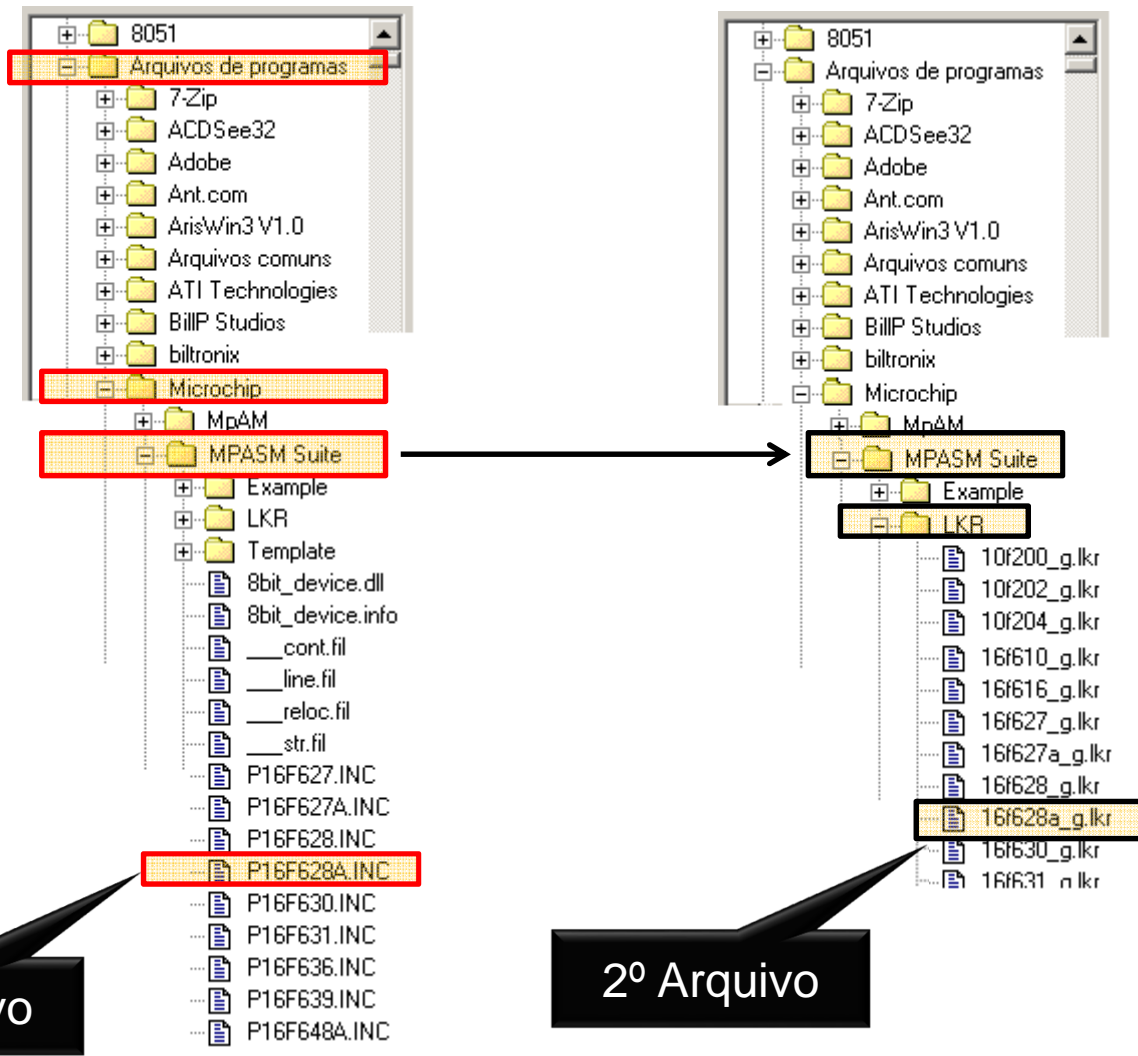
Nome simples
sem caracteres
de controle

Clique para
cadastrar

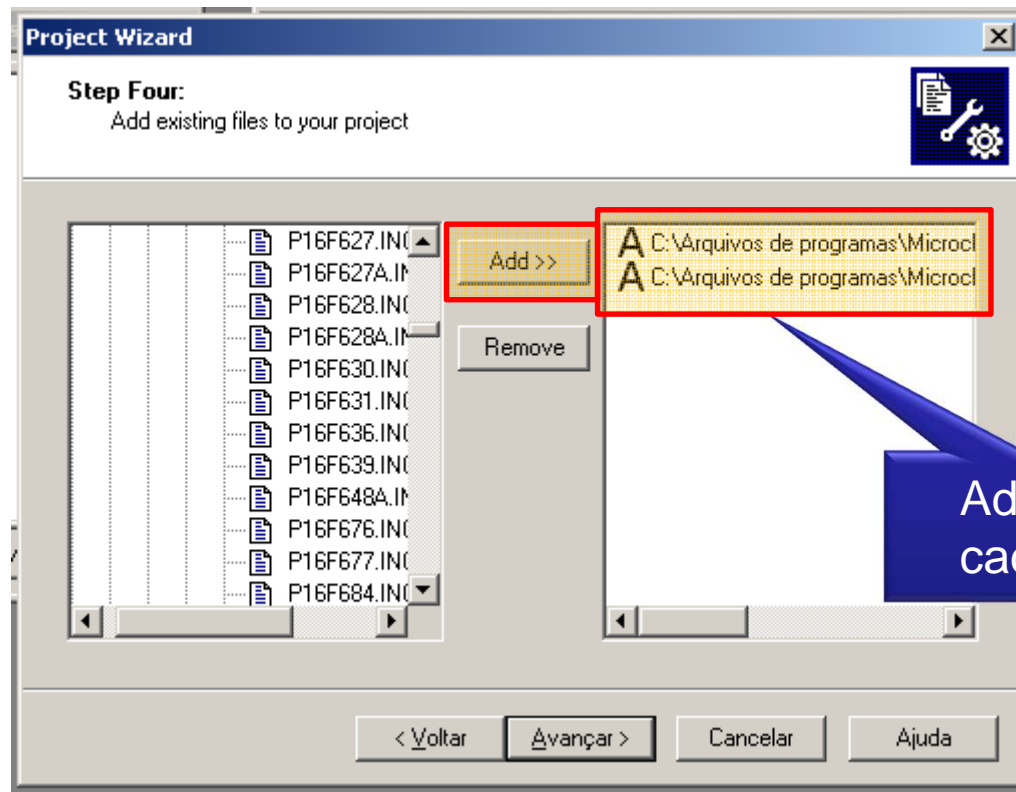
Proseguindo

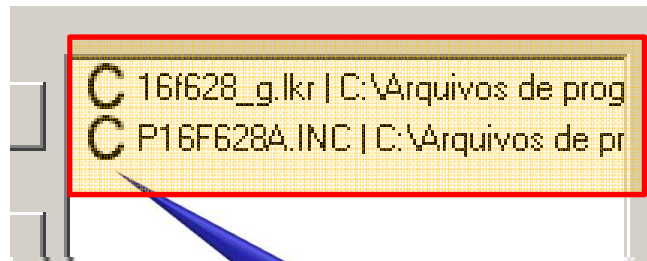


Apenas
avance



Adicionando os programas





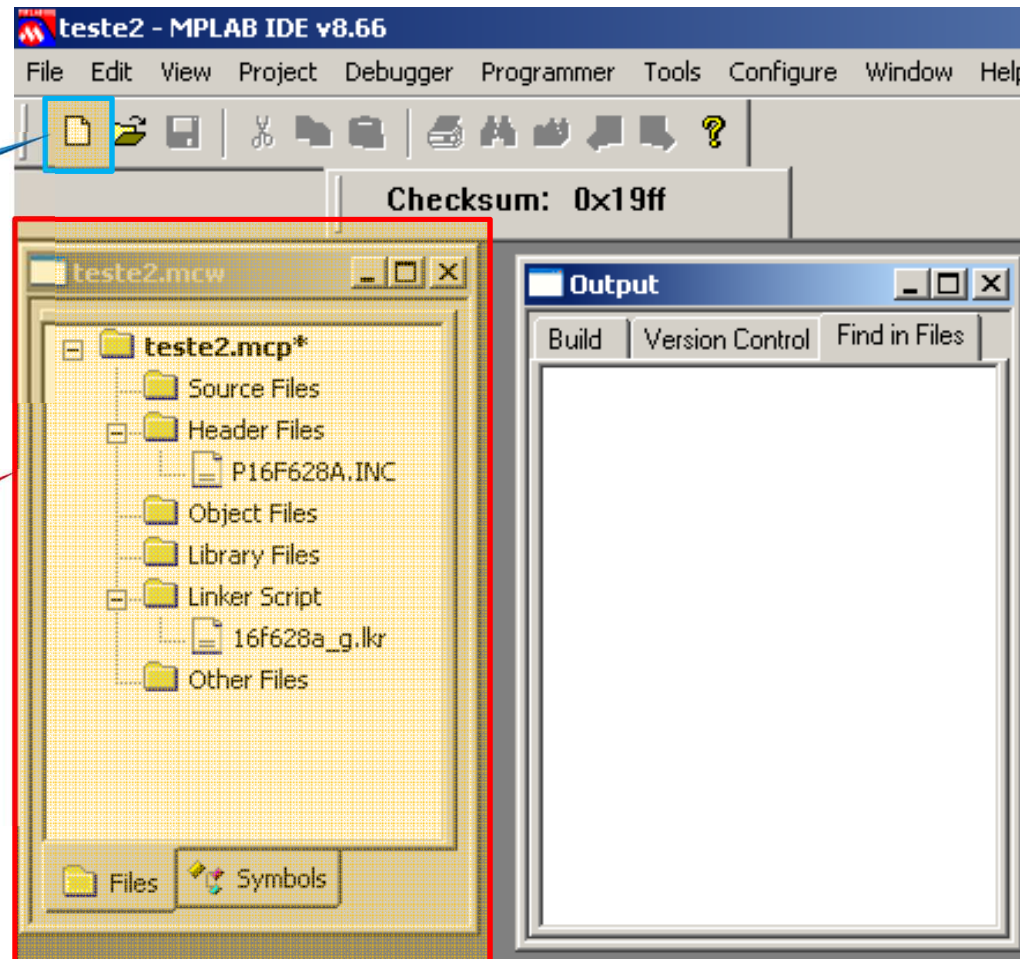
Clique até
virar C

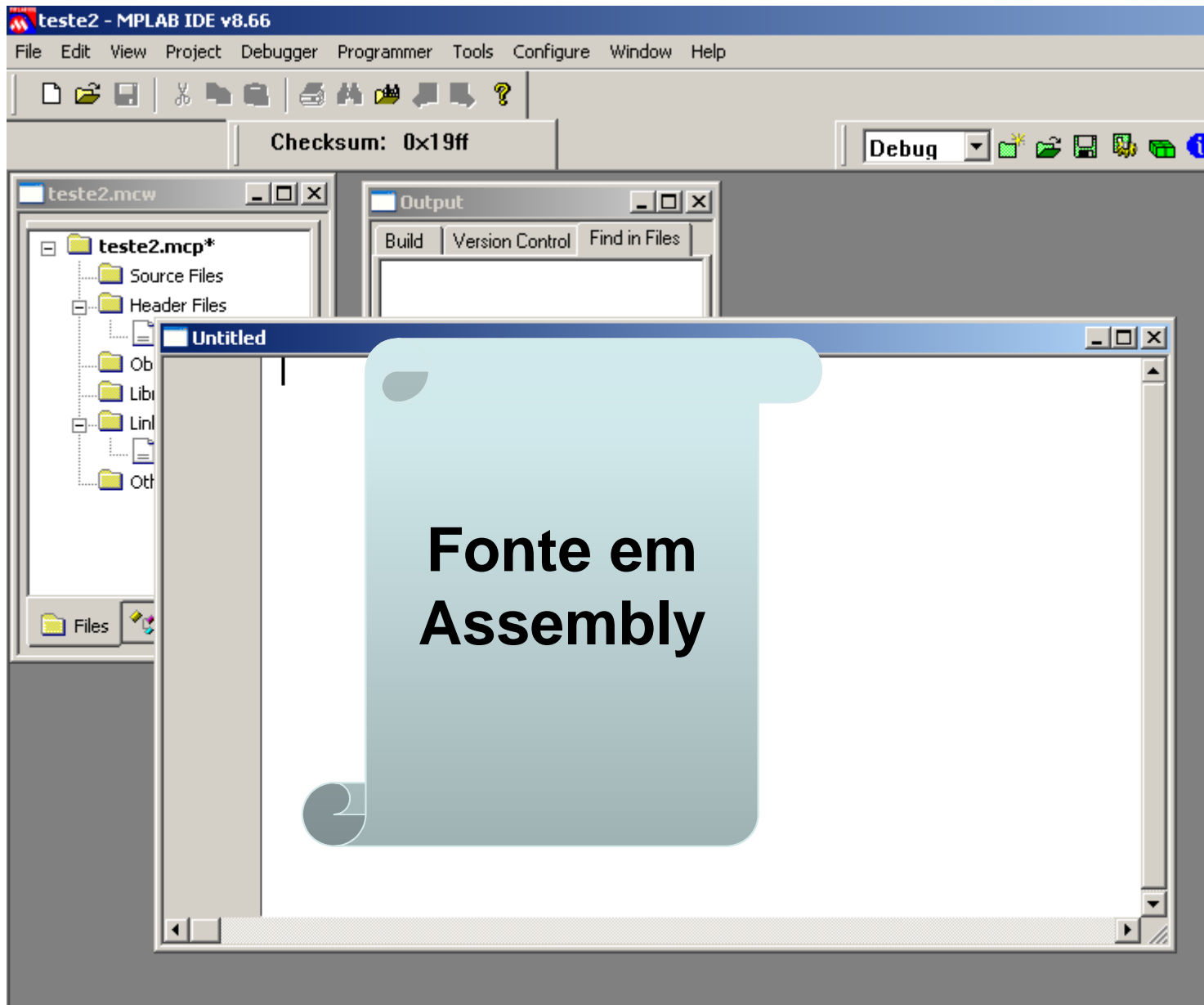
 Avançar e concluir

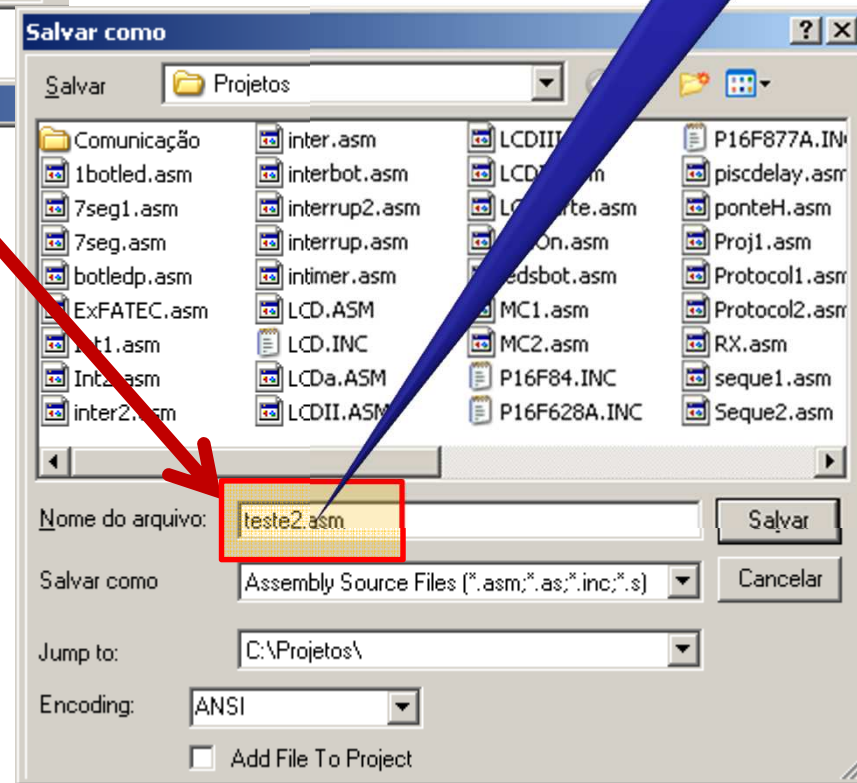
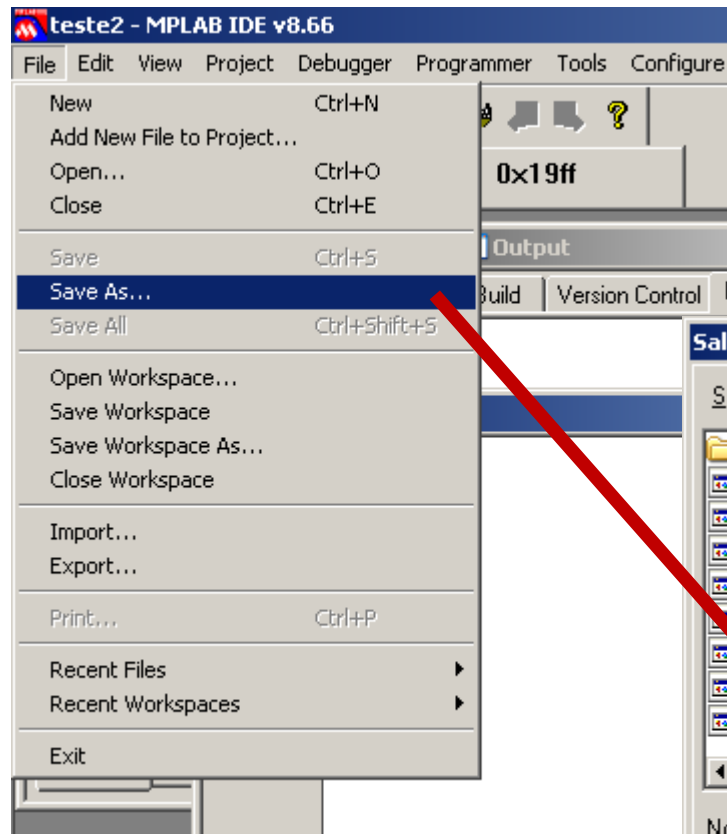
A tela pronta

Criação do
fonte
Assembly

Indicadores de
projeto bem
sucedido

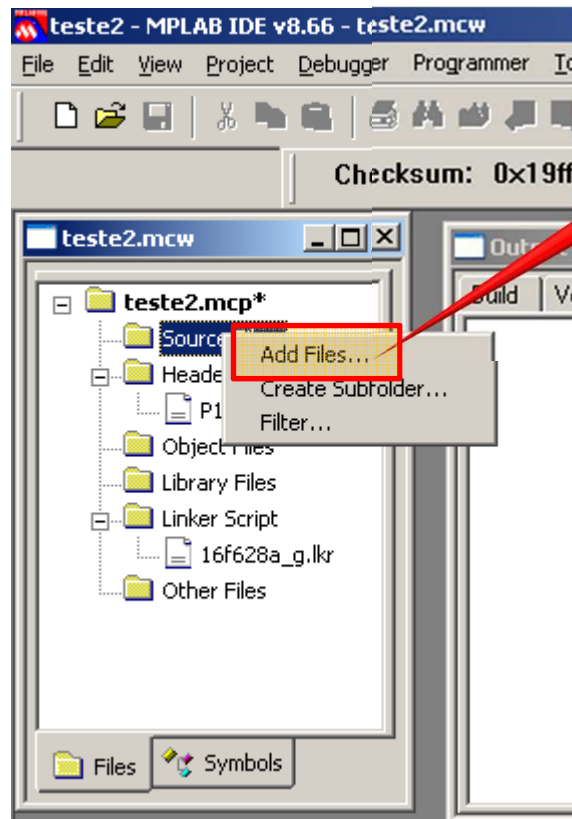






Observe
extensão ASM

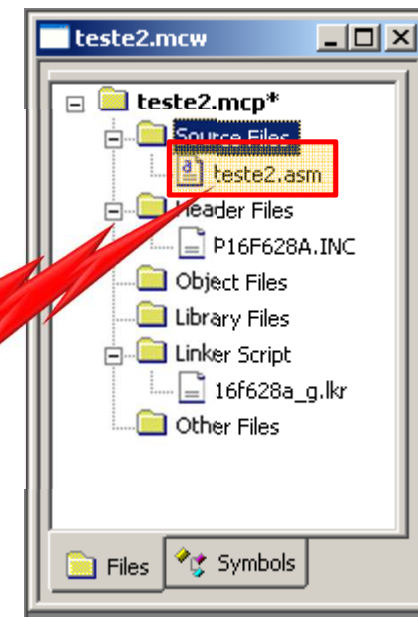
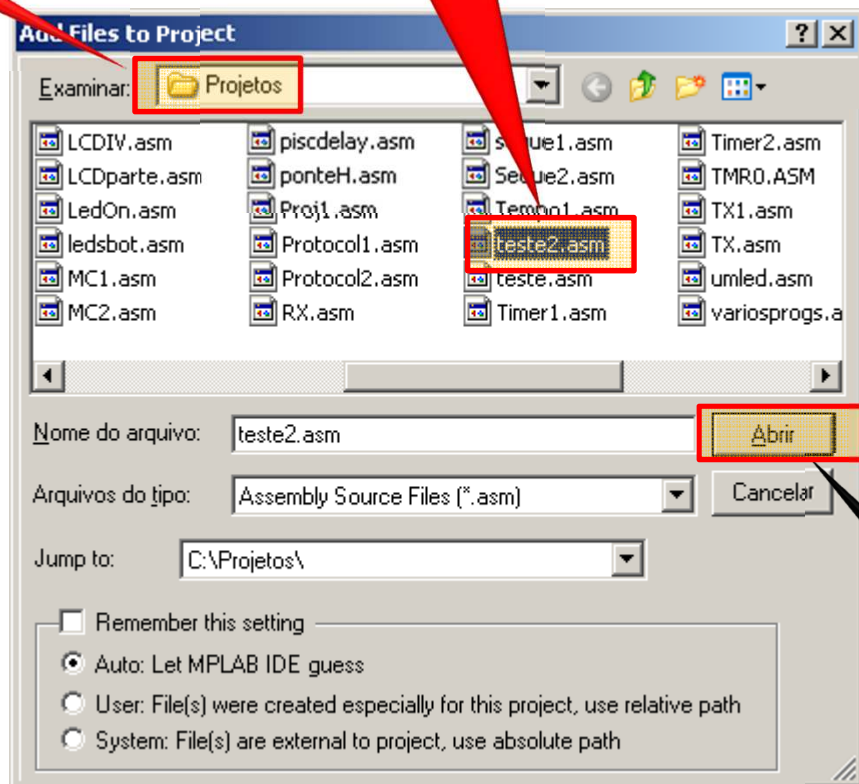
Salve e feche o arquivo



Adicionar
arquivo

Local

Selecioneado



Conectar